

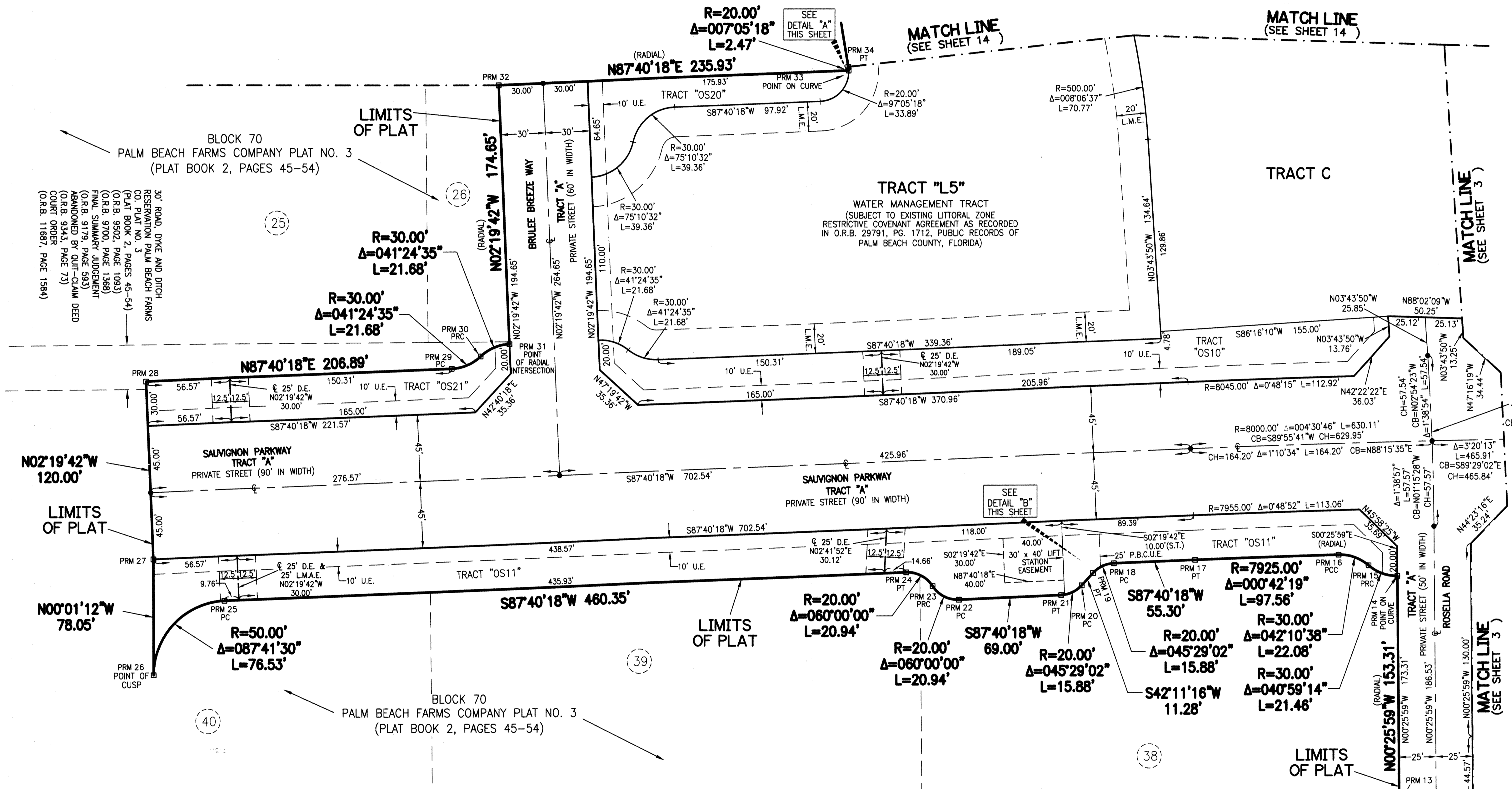
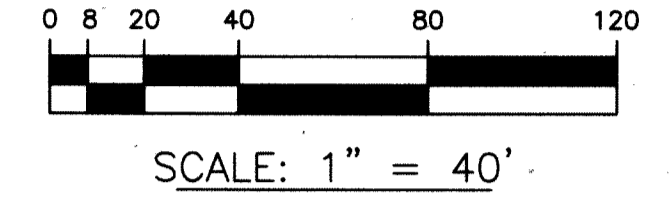
HYDER AGR-PUD SOUTH PLAT ONE

BEING A REPLAT OF ALL OF TRACTS 27 THROUGH 31, TRACTS 34 THROUGH 36, TRACTS 61 THROUGH 63 AND A PORTION OF TRACTS 1 THROUGH 9, TRACTS 24 THROUGH 26, TRACTS 37 THROUGH 40, A PORTION OF TRACTS 32, 33, 60, 64 AND A PORTION OF THE ROAD, DYKE AND DITCH RESERVATIONS, 30.00 FEET IN WIDTH, BLOCK 70, PALM BEACH FARMS CO. PLAT NO. 3, ACCORDING TO THE PLAT THEREOF, AS RECORDED IN PLAT BOOK 2, PAGES 45 THROUGH 54, PUBLIC RECORDS, PALM BEACH COUNTY, FLORIDA, LYING IN SECTIONS 31 AND 32, TOWNSHIP 46 SOUTH, RANGE 42 EAST.

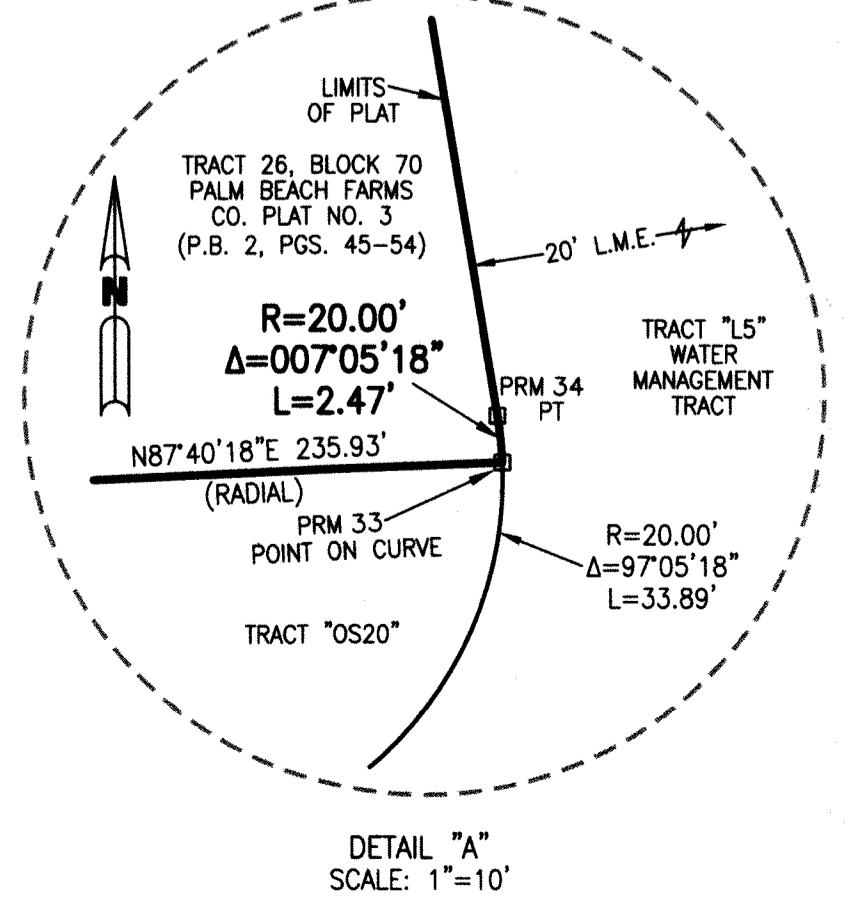
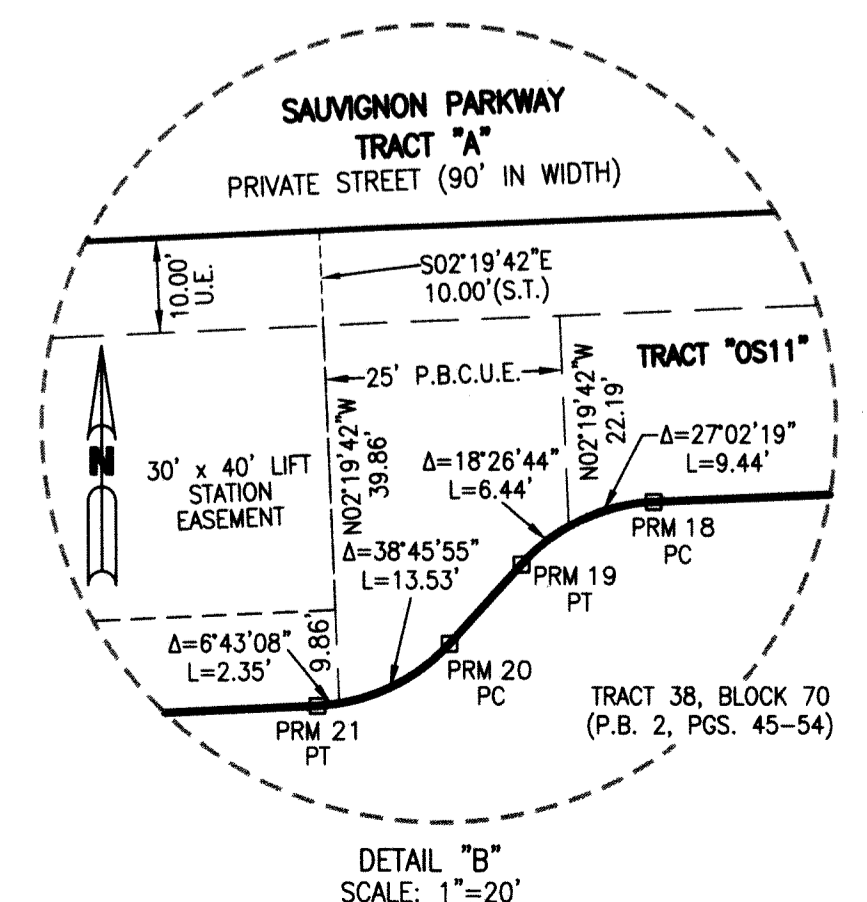
SHEET 4 OF 15



66



- LEGEND:**
- - SET PERMANENT REFERENCE MONUMENT
 - 4"x4" CONCRETE MONUMENT WITH 1.5" DISK STAMPED L.B. #7741
 - - FOUND PERMANENT REFERENCE MONUMENT
 - 4"x4" CONCRETE MONUMENT WITH 1.5" DISK STAMPED L.B. #7741
 - - SET PERMANENT CONTROL POINT
 - NAIL WITH 1.25" DISK STAMPED L.B. #7741
 - - FOUND PERMANENT CONTROL POINT
 - NAIL WITH 1.25" DISK STAMPED L.B. #7741
 - AGR - AGRICULTURAL
 - Δ - DELTA ANGLE
 - B.E. - BUFFER EASEMENT
 - BLK - BLOCK
 - CB - CHORD BEARING
 - CH - CHORD DISTANCE
 - C - CENTERLINE
 - D.B. - DEED BOOK
 - D.E. - PRIVATE DRAINAGE EASEMENT
 - F.P.L. - FLORIDA POWER & LIGHT
 - L - ARC LENGTH
 - L.A.E. - LIMITED ACCESS EASEMENT
 - L.M.A.E. - LAKE MAINTENANCE EASEMENT
 - L.M.E. - LAKE MAINTENANCE EASEMENT
 - L.W.D.D. - LAKE WORTH DRAINAGE DISTRICT
 - N.R. - NOT RADIAL
 - N.T.S. - NOT TO SCALE
 - O.R.B. - OFFICIAL RECORD BOOK
 - O.E. - MAINTENANCE & ROOF OVERHANG EASEMENT
 - P.B.C.U.E. - PALM BEACH COUNTY UTILITY EASEMENT
 - P.B. - PLAT BOOK
 - P.C. - POINT OF CURVATURE
 - P.C.P. - PERMANENT CONTROL POINT
 - P.D.E. - PUBLIC DRAINAGE EASEMENT
 - PG. - PAGE
 - PGS. - PAGES
 - P.O.B. - POINT OF BEGINNING
 - P.C.C. - POINT OF COMPOUND CURVATURE
 - P.O.C. - POINT OF COMMENCEMENT
 - PI - POINT OF INTERSECTION
 - PR - POINT OF REVERSE CURVATURE
 - PRM - PERMANENT REFERENCE MONUMENT
 - P.S.M. - PROFESSIONAL SURVEYOR AND MAPPER
 - PT. - POINT OF TANGENCY
 - P.U.D. - PLANNED UNIT DEVELOPMENT
 - R - RADIUS
 - RAD. - RADIAL
 - R/W - RIGHT-OF-WAY
 - R. D. & D. - ROAD, DYKE AND DITCH RESERVATION
 - S.T. - SURVEY TIE
 - TYP. - TYPICAL
 - U.E. - UTILITY EASEMENT
- NOTE:**
 COORDINATES SHOWN ARE GRID COORDINATES DATUM = NAD 83 (1990 ADJUSTMENT)
 ZONE = FLORIDA EAST ZONE
 LINEAR UNIT = U.S. SURVEY FEET
 COORDINATE SYSTEM = 1983 STATE PLANE TRANSVERSE MERCATOR PROJECTION
 ALL DISTANCES ARE GROUND
 SCALE FACTOR = 1.00002237
 PLAT BEARING = GRID BEARING
 GROUND DISTANCE X SCALE FACTOR = GRID DISTANCE



PRM	NORTHING	EASTING
PRM13	758897.1084	920679.3631
PRM14	759050.4176	920678.2043
PRM15	759057.6232	920658.4721
PRM16	759064.8176	920638.1170
PRM17	759061.4541	920540.6085
PRM18	759059.2076	920485.3541
PRM19	759052.6552	920471.3473
PRM20	759044.2960	920463.7709
PRM21	759037.7436	920448.7641
PRM22	759034.9404	920380.8196
PRM23	759044.2287	920363.1067
PRM24	759053.5171	920345.3938
PRM25	759034.8152	919885.4160
PRM26	758984.8378	919837.4462
PRM27	759062.8891	919837.4189
PRM28	759182.7928	919832.5438
PRM29	759191.1977	920039.2682
PRM30	759199.4878	920058.7887
PRM31	759207.7980	920078.3112
PRM32	759382.3063	920071.2160
PRM33	759391.8910	920306.9537
PRM34	759394.3508	920306.7007

THIS INSTRUMENT WAS PREPARED BY
 PERRY C. WHITE, P.S.M. 4213, STATE OF FLORIDA
 SAND & HILLS SURVEYING, INC.
 8461 LAKE WORTH ROAD, SUITE 410
 LAKE WORTH, FLORIDA 33467
 LB-7741

